



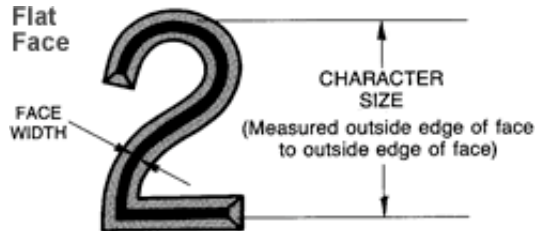
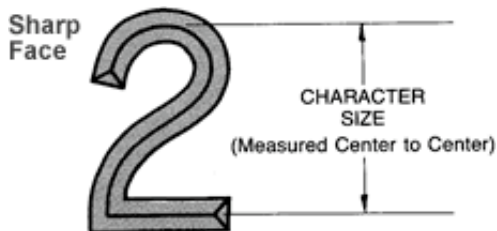
- About Us
- Technical Info
- Products
- Support
- Catalog Request

Character Specifications & Styles

- [Character Specifications](#)
- [Character Styles](#)
- [Character Styles Supplied with Standard Equipment](#)

Character Specifications

Measurement Standards

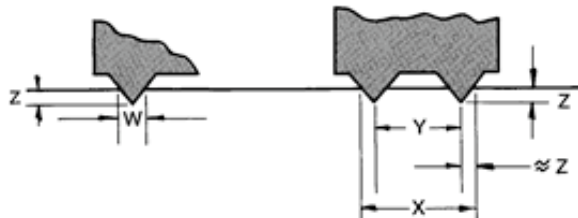


Note: Round Face characters are also measured center to center.

Variation of Character Size with Changes in Depth of Impression

The following illustration and simple formula explain the relationship between the depth of impression and the resulting size of the stamped characters.

Side View of Character



- $W \approx 2Z$
- $W =$ Approximate stamped face width
- $X \approx Y + 2Z$
- $X =$ Approximate height or width of stamped character
- $Y =$ Engraved character height or width
- $Z =$ Depth of impression

[Back to Top](#)

Character Styles

Reverse printing character styles are available. Check with factory for price and availability.

Style Number	Character Style	Style Name	Height to Width Ratio**
500	1234567890ABCD	Gothic Extra Condensed	3.2/1
501	1234567890ABCD	Gothic Condensed	2.2/1
502	1234567890ABCD	Gothic Normal	1.5/1
506	1234567890ABCD	Gothic Extended	1/1
523	1234567890ABCD	Hand Stamp Gothic	1.4/1
531*	1234567890	Open Style Gothic	2.2/1
532*	1234567890	Special Style Gothic	2.4/1
533*	1234567890	Sharp Face Italic	1.4/1
550*	1234567890	Flat Face Gothic Extra Condensed	2.6/1

 [Back to Top](#)

[home](#) | [contact info](#) | [company profile](#) | [marking methods](#) | [character specs](#) | [products](#) | [product chooser](#) | [support](#) | [catalog request](#) | [site map](#)

PO Box 187, 1 High St., Sangerville, ME 04479 USA • Phone 207-876-3541 • Fax 207-876-3566
©1995-2004 *Numberall Stamp & Tool Co., Inc.* [Our Privacy Statement](#)

Powered by 