

UNITTOOL **REPLACEMENT PARTS**

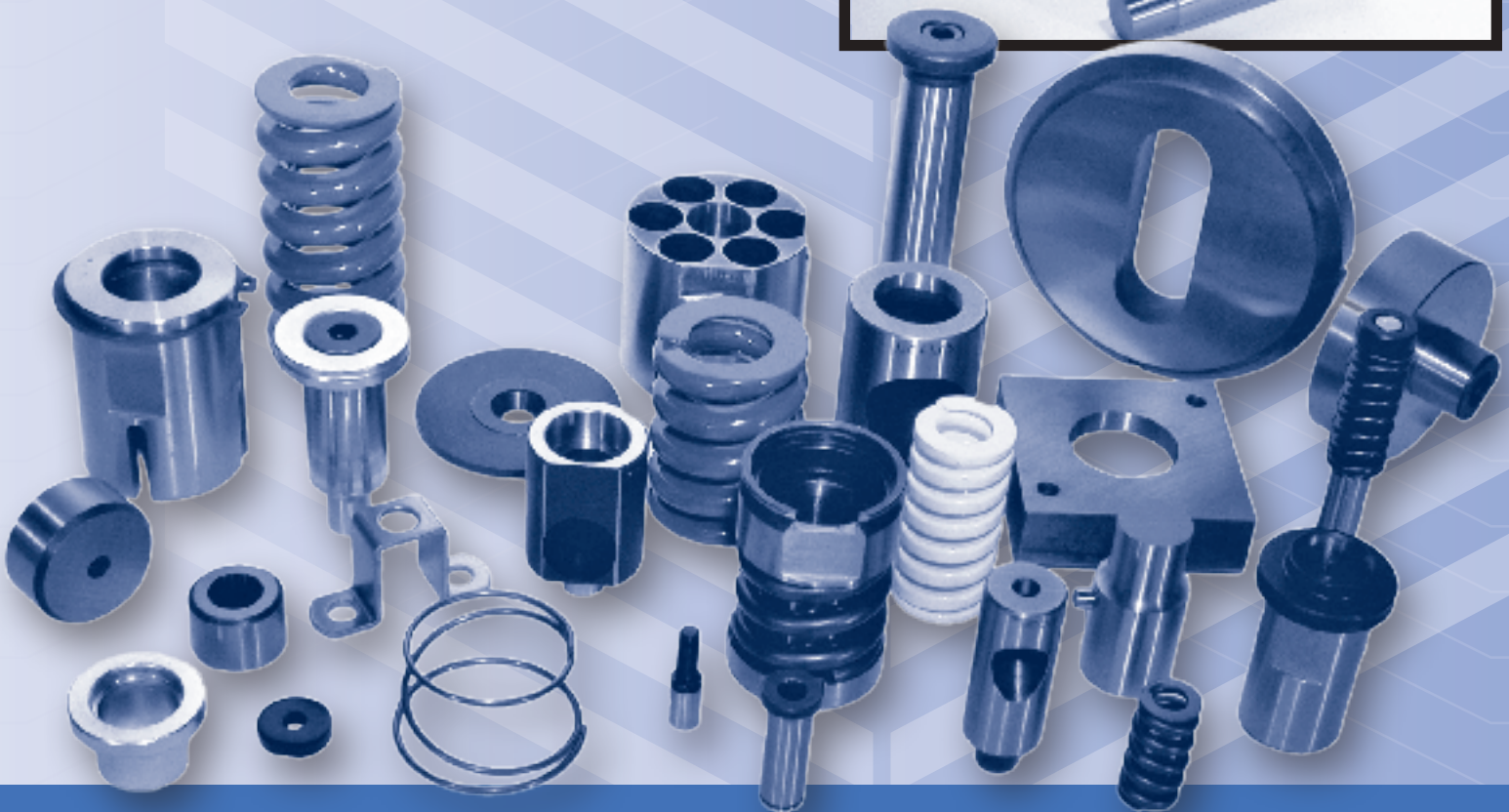
Manufactured by
UNITTOOL PUNCH & DIE COMPANY

TO FIT:

PIERCE-ALL UNITS

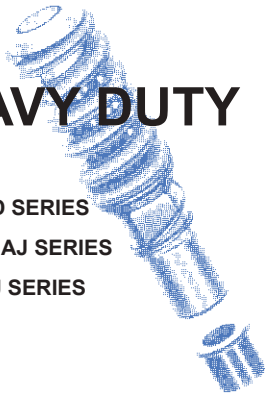
**® UNIPUNCH
PRODUCTS
UNITS**

® STRIPPIT UNITS



HEAVY DUTY

PIERCE-ALL HD SERIES
 UNIPUNCH A, AJ SERIES
 STRIPPIT CJ SERIES



Holder Width	Shut Height	Die Height	PAGE
1"	8 ³ / ₈ "	3 ¹ / ₂ "	3
1 ¹ / ₄ "	"	"	4
1 ¹ / ₂ "	"	"	5
2"	"	"	6
2 ¹ / ₂ "	"	"	7
3"	"	"	8
3 ¹ / ₂ "	"	"	9
5" & 5 ¹ / ₂ "	"	"	9

MEDIUM DUTY

PIERCE-ALL RD SERIES
 UNIPUNCH B, BX SERIES
 STRIPPIT BN SERIES



Holder Width	Shut Height	Die Height	PAGE
³ / ₄ "	5 ¹ / ₂ "	2 ¹⁹ / ₃₂ "	10
1"	"	"	11
1 ¹ / ₄ "	"	"	12
1 ³ / ₄ "	"	"	13
2 ¹ / ₄ "	"	"	14
3"	"	"	15
5" & 5 ¹ / ₂ "	"	"	16

LIGHT DUTY

PIERCE-ALL LD SERIES
 UNIPUNCH G SERIES
 STRIPPIT C SERIES



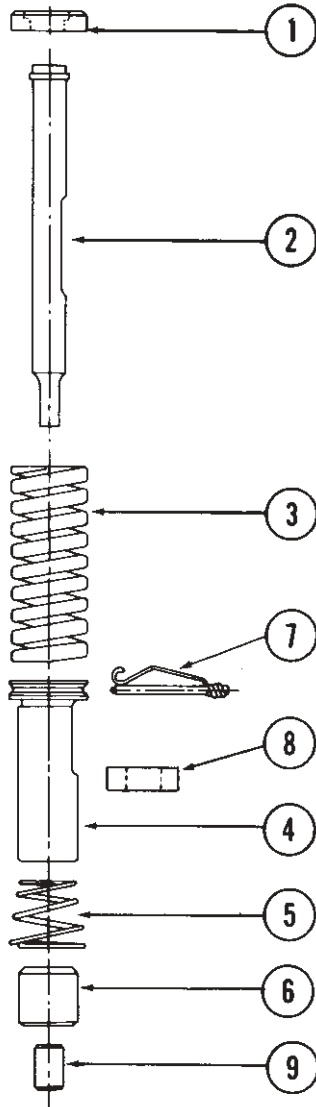
Holder Width	Shut Height	Die Height	PAGE
³ / ₄ "	7 ¹ / ₂ " & 6 ¹ / ₄ "	3 ¹ / ₈ "	17

1"
HOLDER WIDTH

8³/₈" SHUT
HEIGHT

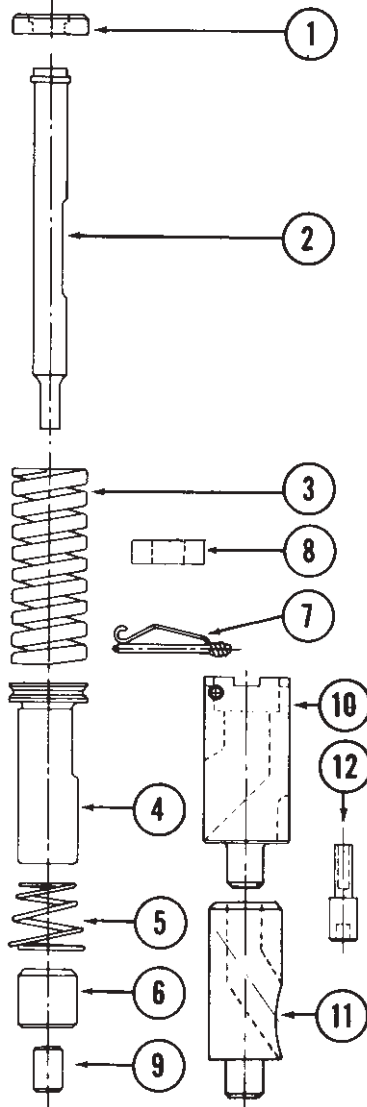
3¹/₂" DIE
HEIGHT

HEAVY DUTY



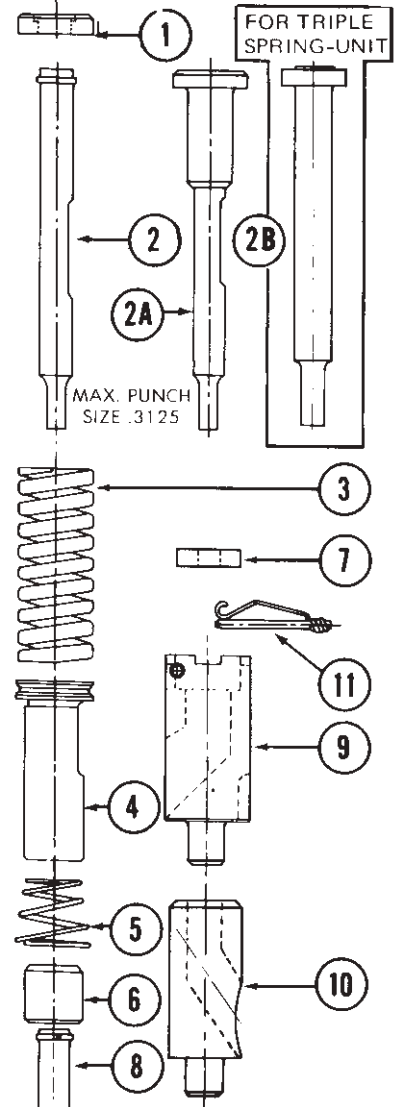
**PIERCE-ALL
SERIES—HD**

ITEM NO.	PIERCE-ALL REF. NO.	DESCRIPTION	UNITTOOL CAT. NO.
1	1319	Punch Head	HPH 107
2	1324	Punch	HP 122
—	1310	Punch & Head Assy.	HPA 102A
3	4531	Stripper Spring	HSS 105
4	3310	Guide	HG 104
5	4332	Lifter Spring	HLS 126
6	2120	Die Button	HD 123
7	9010	Punch Retainer	PR 100
8	9030	Guide Retainer	GR 300
9	9000	Pilot Pin	PP 1000



**UNIPUNCH PRODUCTS
SERIES—A, AJ**

ITEM NO.	UNIPUNCH PRODUCTS REF. NO.	DESCRIPTION	UNITTOOL CAT. NO.
1	2075	Punch Head	HPH 107
2	2111	Punch	HP 122
—	2011	Punch & Head Assy.	HPA 102A
—	2016	Shaped Punch Ass'y	HPA 102K
3	2045	Stripper Spring	HSS 105
4	2030	Guide	HG 104
—	2035	Keyed Guide	HG 104K
5	2070	Lifter Spring	HLS 106
6	2120	Die Button	HD 123
—	2125	Shaped Die	HD 123K
7	2180	Punch Retainer	PR 100
8	1002	Guide Retainer	GR 300
9	1001	Pilot Pin	PP 1000
—	1101	Pilot Pin (Diamond)	PP 1000K
10	10472	Die Adapter	HDA 108
11	2121	Pedestal Die	HPD 123
12	1120	Pilot Pin (Pedestal)	UPP 1000



**STRIPPIT Single Spring
SERIES—CJ
Unit**

ITEM NO.	STRIPPIT REF. NO.	DESCRIPTION	UNITTOOL CAT. NO.
1	—	Punch Head	HPH 107
2	—	Punch	HP 122
—	—	Punch & Head Assy.	HPA 102A
*2A	53063-000	Solid Head Punch	WHP-102
2B	44636-000	Punch	WHP 102 1
3	53064-000	Stripper Spring	HSS 105
4	53062-000	Guide	HG 104
5	64415-000	Lifter Spring	HLS 106
6	40305-000	Die Button	WHD 103
7	200276-000	Guide Retainer	WGR 300
8	58584-000	Pilot Pin	PP 1200
9	60924-000	Keyed Die Adapter	WDA 108K
10	200393-000	Pedestal Die	HPD 123
11	75642-000	Punch Retainer	PR 1000

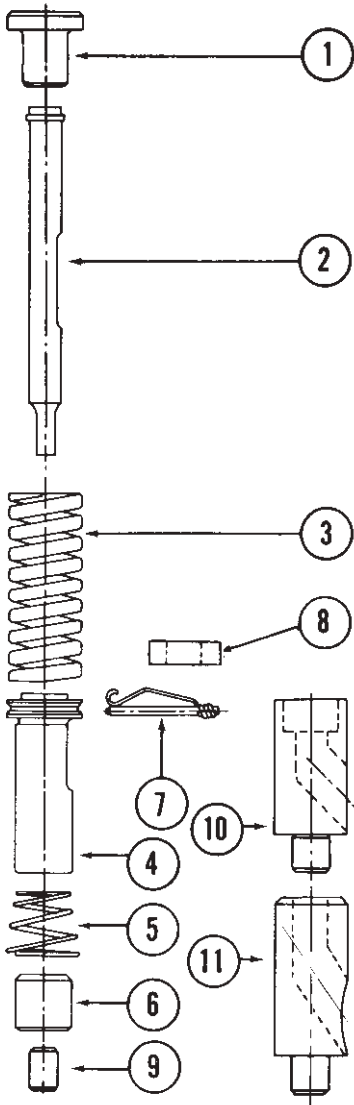
* Available on Spec. Order

1 1/4"
HOLDER WIDTH

8 3/8" SHUT HEIGHT

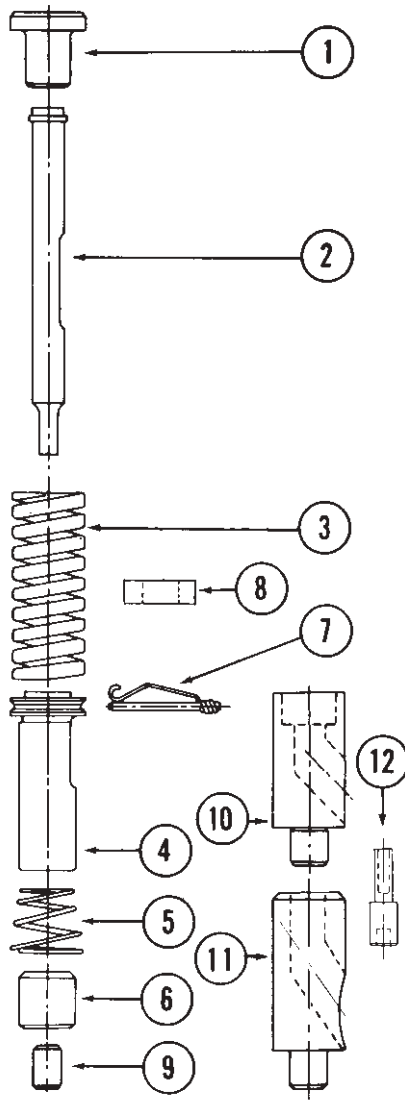
3 1/2" DIE HEIGHT

HEAVY DUTY



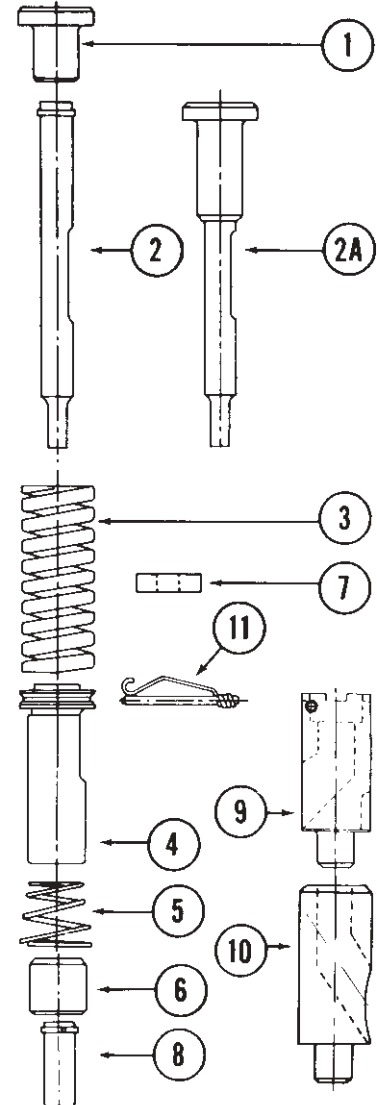
**PIERCE-ALL
SERIES—HD, HDA**

ITEM NO.	PIERCE-ALL REF. NO.	DESCRIPTION	UNIT TOOL CAT. NO.
1	1329	Punch Head	HPH 127
2	1324	Punch	HP 122
—	1320	Punch & Head Assy.	HPA 122A
—	1321, 1322	Shaped Punch Ass'y	HPA 122K
3	4532	Stripper Spring	HSS 125
4	3320	Guide	HG 124
—	3321	Keyed Guide	HG 124K
5	4332	Lifter Spring	HLS 126
6	2120	Die Button	HD 123
—	2121, 2122	Shaped Die	HD 123K
7	9010	Punch Retainer	PR 100
8	9030	Guide Retainer	GR 300
9	9000	Pilot Pin	PP 1000
—	9001	Shaped Pilot Pin	PP 1000K
10	9764	Keyed Die Adapter	HDA 128K
11	2320	Pedestal Die	HPD 123
—	2321, 2322	Shaped Ped Die	HPD 123K



**UNIPUNCH PRODUCTS
SERIES—A-AJ**

ITEM NO.	UNIPUNCH PRODUCTS REF. NO.	DESCRIPTION	UNIT TOOL CAT. NO.
1	2171	Punch Head	HPH 127
2	2111	Punch	HP 122
—	2010	Punch & Head Assy.	HPA 122A
—	2115	Shaped Punch Ass'y	HPA 122K
3	2140	Stripper Spring	HSS 125
4	2130	Guide	HG 124
—	2135	Keyed Guide	HG 124K
5	2170	Lifter Spring	HLS 126
6	2120	Die Button	HD 123
—	2125	Shaped Die	HD 123K
7	2180	Punch Retainer	PR 100
8	1002	Guide Retainer	GR 300
9	1001	Pilot Pin	PP 1000
—	1101	Shaped Pilot Pin	PP 1000K
10	14172	Die Adapter	HDA 128
—	14172	Keyed Die Adapter	HDA 128K
11	2121	Pedestal Die	HPD 123
—	2126	Shaped Ped Die	HPD 123K
12	1120	Pilot Pin (Pedestal)	UPP 1000



**STRIPPIT (1 1/4 and 1 3/8 HOLDER WIDTH)
SERIES—CJ**

ITEM NO.	STRIPPIT REF. NO.	DESCRIPTION	UNIT TOOL CAT. NO.
1	—	Punch Head	HPH 127
2	—	Punch	HP 122
—	—	Punch & Head Assy.	HPA 122A
—	—	Shaped Punch Ass'y	WHPA 122K
*2A	41674-000	Solid Head Punch	WHP 122
3	17396-000	Stripper Spring	HSS 125
4	200634-000	Guide	HG 124
—	41869-000	Keyed Guide	WHG 124K
5	41677-000	Lifter Spring	HLS 126
6	40311-000	Die Button	WHD 123
—	45814-000	Shaped Die	WHD 123K
7	200276-000	Guide Retainer	WGR 300
8	58584-000	Pilot Pin	PP 1200
9	60925-000	Keyed Die Adapter	WDA 128K
10	200393-000	Pedestal Die	HPD 123
—	43523-000	Shaped Ped Die	HPD 123K
11	75642-000	Punch Retainer	PR 100

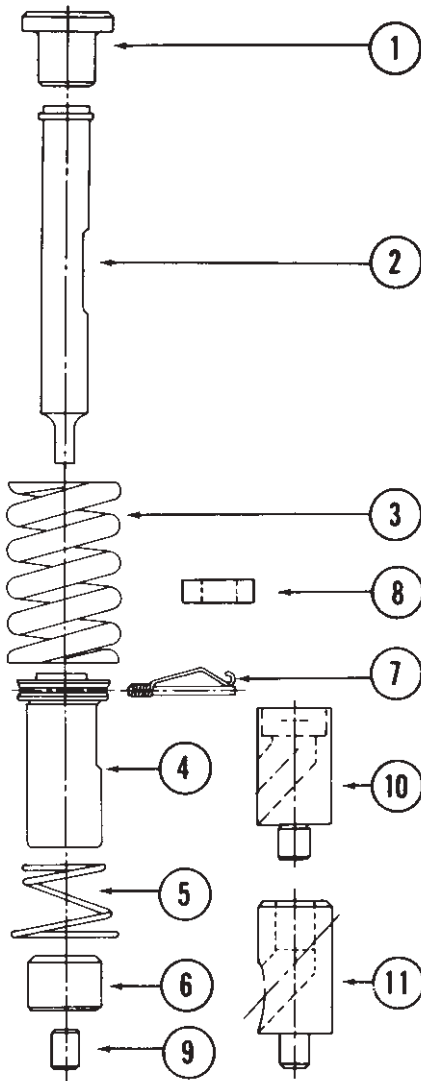
* Available on Spec. Order

1 1/2"
HOLDER WIDTH

8 3/8" SHUT
HEIGHT

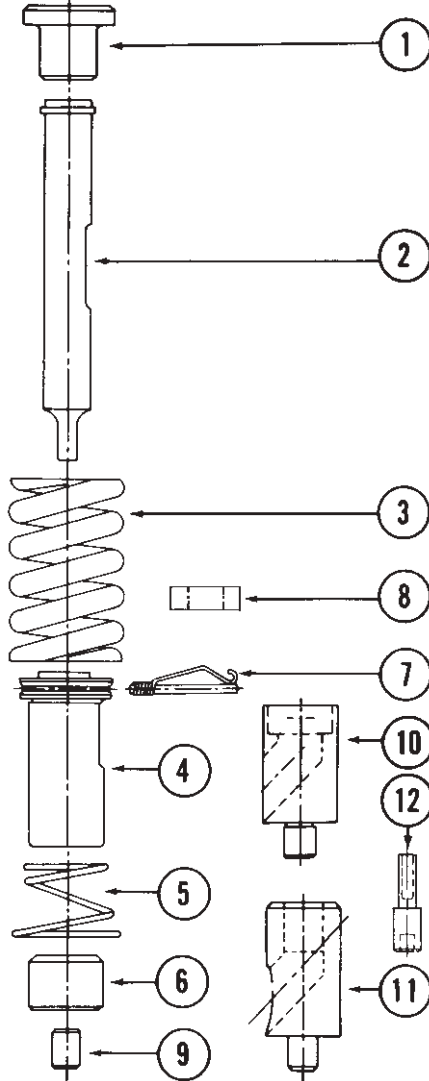
3 1/2" DIE
HEIGHT

HEAVY DUTY



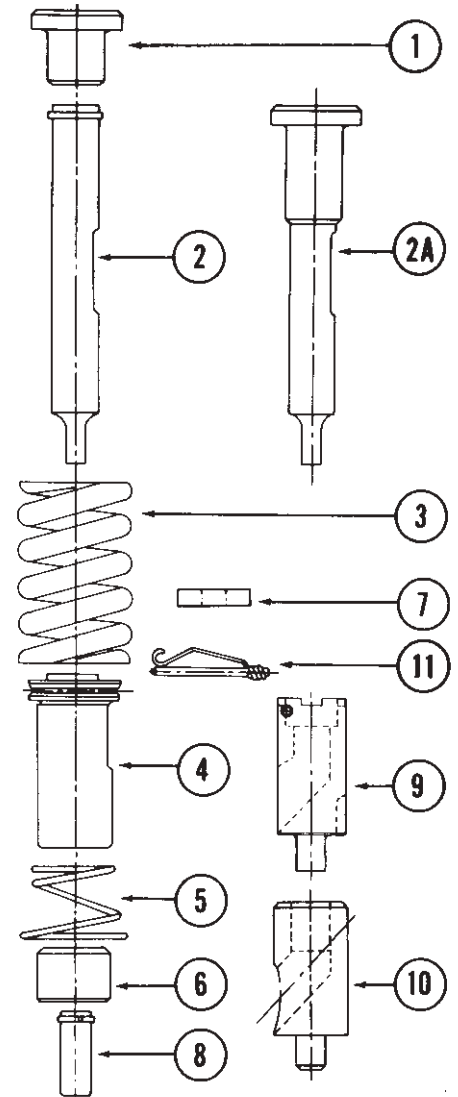
**PIERCE-ALL
SERIES—HD, HDA**

ITEM NO.	PIERCE-ALL REF. NO.	DESCRIPTION	UNITTOOL CAT. NO.
1	1339	Punch Head	HPH 157
2	1334	Punch	HP 152
—	1330	Punch & Hd. Assy.	HPA 152A
—	1331, 1332	Shaped Punch Ass'y	HPA 152K
3	4533	Stripper Spring	HSS 155
4	3330	Guide	HG 154
—	3331	Keyed Guide	HG 154K
5	4333	Lifter Spring	HLS 156
6	2130	Die Button	HD 153
—	2131, 2132	Shaped Die	HD 153K
7	9010	Punch Retainer	PR 100
8	9030	Guide Retainer	GR 300
9	9000	Pilot Pin	PP 1000
—	9001	Shaped Pilot Pin	PP 1000K
10	9765	Keyed Die Adapter	HDA 158K
11	2330	Pedestal Die	HPD 153
—	2331, 2332	Shaped Ped Die	HPD 153K



**UNIPUNCH PRODUCTS
SERIES—A-AJ**

ITEM NO.	UNIPUNCH PRODUCTS REF. NO.	DESCRIPTION	UNITTOOL CAT. NO.
1	2271	Punch Head	HPH 157
2	2211	Punch	HP 152
—	2210	Punch & Hd. Assy.	HPA 152A
—	2215	Shaped Punch Ass'y	HPA 152K
3	2240	Stripper Spring	HSS 155
4	2230	Guide	HG 154
—	2235	Keyed Guide	HG 154K
5	2270	Lifter Spring	HLS 156
6	2220	Die Button	HD 153
—	2225	Shaped Die	HD 153K
7	2180	Punch Retainer	PR 100
8	1002	Guide Retainer	GR 300
9	1001	Pilot Pin	PP 1000
—	1101	Shaped Pilot Pin	PP 1000K
10	14272	Die Adapter	HDA 158
—	14174	Keyed Die Adapter	HDA 158K
11	2221	Pedestal Die	HPD 153
—	2226	Shaped Ped Die	HPD 153K
12	1120	Pilot Pin (Pedestal)	UPP 1000



**STRIPPIT (1 1/2 and 1 5/8 HOLDER WIDTH)
SERIES—CJ**

ITEM NO.	STRIPPIT REF. NO.	DESCRIPTION	UNITTOOL CAT. NO.
1	—	Punch Head	HPH 157
2	—	Punch	HP 152
—	—	Punch & Hd. Assy.	HPA 152A
—	—	Shaped Punch Ass'y	WHPA 152K
*2A	41842-000	Solid Head Punch	WHP 152
3	41686-000	Stripper Spring	HSS 155
4	41874-000	Guide	HG 154
—	41687-000	Keyed Guide	WHG 154K
5	41688-000	Lifter Spring	HLS 156
6	40317-000	Die Button	WHD 153
—	45820-000	Shaped Die	WHD 153K
7	200276-000	Guide Retainer	WGR 300
8	58584-000	Pilot Pin	PP 1200
9	60926-000	Die Adapter	WDA 158K
10	200394-000	Pedestal Die	HPD 153
—	43586-000	Shaped Ped Die	HPD 153K
11	75642-000	Punch Retainer	PR 100
12	58584-000	Pilot Pin (Pedestal)	PP 1200

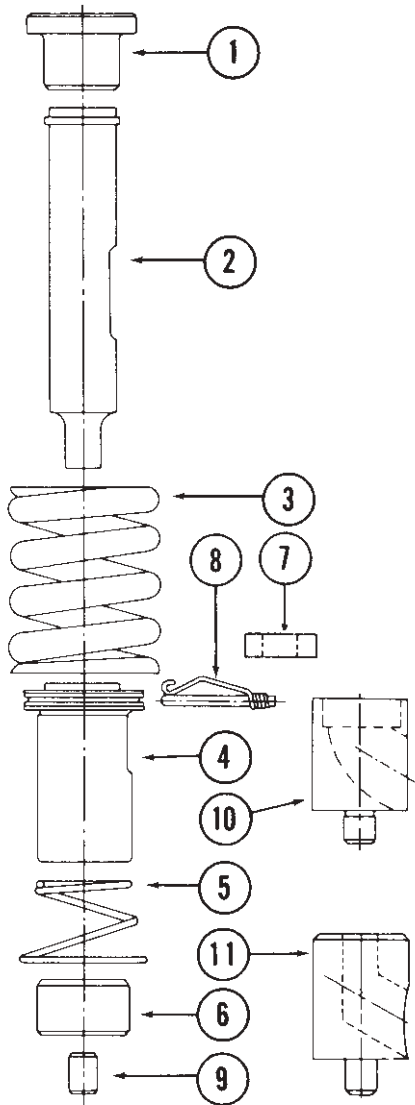
* Available on Spec. Order

2"
HOLDER WIDTH

8³/₈" SHUT HEIGHT

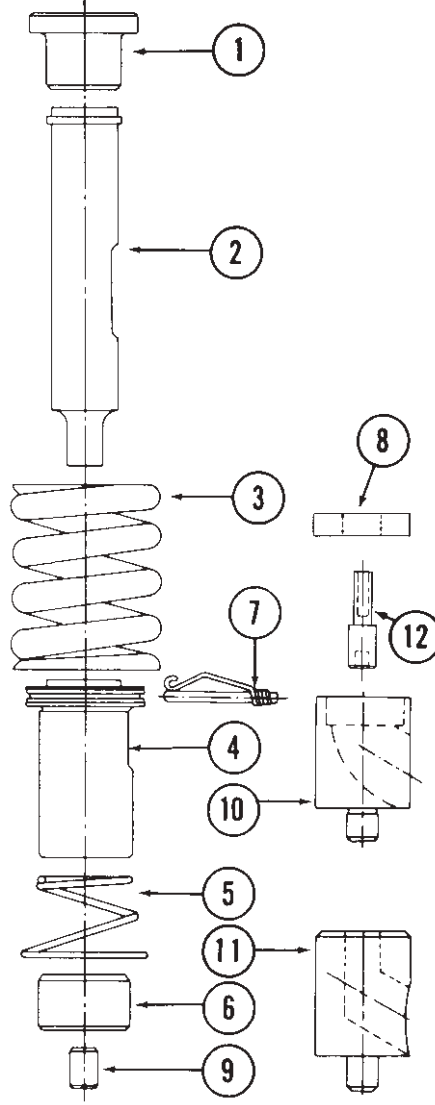
3¹/₂" DIE HEIGHT

HEAVY DUTY



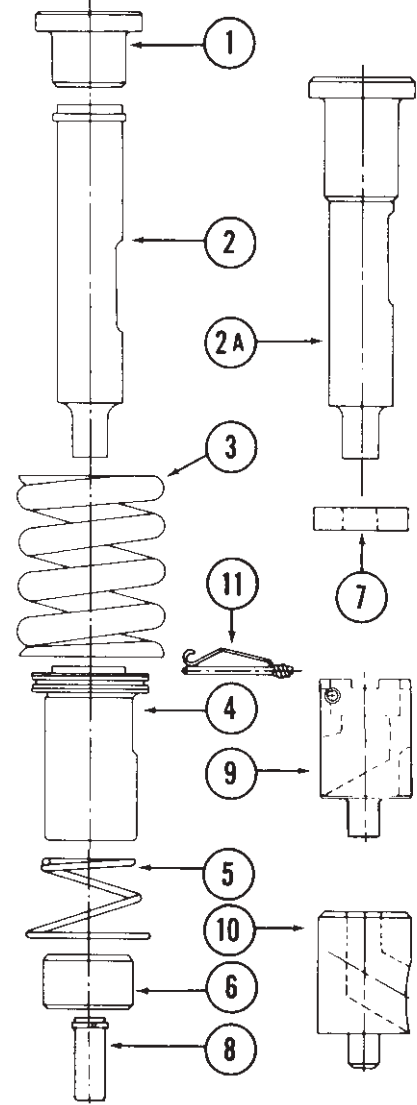
**PIERCE-ALL
SERIES—HD, HDA**

ITEM NO.	PIERCE-ALL REF. NO.	DESCRIPTION	UNIT TOOL CAT. NO.
1	1349	Punch Head	HPH 207
2	1344	Punch	HP 202
—	1340	Punch & Hd. Assy.	HPA 202A
—	1341, 1342	Shaped Punch Ass'y	HPA 202K
3	4534	Stripper Spring	HSS 205
4	3340	Guide	HG 204
—	3341	Keyed Guide	HG 204K
5	4334	Lifter Spring	HLS 206
6	2140	Die Button	HD 203
—	2141, 2142	Shaped Die	HD 203K
7	9010	Punch Retainer	PR 100
8	9030	Guide Retainer	GR 300
9	9000	Pilot Pin	PP 1000
—	9001	Shaped Pilot Pin	PP 1000K
10	9766	Keyed Die Adapter	HDA 208K
11	2340	Pedestal Die	HPD 203
—	2341, 2342	Shaped Ped Die	HPD 203K



**UNIPUNCH PRODUCTS
SERIES—A, AJ**

ITEM NO.	UNIPUNCH PRODUCTS REF. NO.	DESCRIPTION	UNIT TOOL CAT. NO.
1	2371	Punch Head	HPH 207
2	2311	Punch	HP 202
—	2310	Punch & Head Assy.	HPA 202A
—	2315	Shaped Punch Ass'y	HPA 202K
3	2340	Stripper Spring	HSS 205
4	2330	Guide	HG 204
—	2335	Keyed Guide	HG 204K
5	2370	Lifter Spring	HLS 206
6	2320	Die Button	HD 203
—	2325-2	Shaped Die	HD 203K
7	2180	Punch Retainer	PR 100
8	1002	Guide Retainer	GR 300
9	1001	Pilot Pin	PP 1000
—	1101	Shaped Pilot Pin	PP 1000K
10	14372	Die Adapter	HDA 208
—	14374	Keyed Die Adapter	HDA 208K
11	2321	Pedestal Die	HPD 203
—	2326	Shaped Ped Die	HPD 203K
12	1120	Pilot Pin (Pedestal)	UPP 1000



**STRIPPIT
SERIES—CJ**

ITEM NO.	STRIPPIT REF. NO.	DESCRIPTION	UNIT TOOL CAT. NO.
1	—	Punch Head	HPH 207
2	—	Punch	HP 202
—	—	Punch & Hd. Assy.	HPA 202A
—	—	Shaped Punch Ass'y	WHPA 202K
*2A	41705-000	Solid Head Punch	WHP 202
3	41706-000	Stripper Spring	HSS 205
4	41707-000	Guide	HG 204
—	41879-000	Keyed Guide	WHG 204K
5	41708-000	Lifter Spring	HLS 206
6	40323-000	Die Button	WHD 203
—	45826-000	Shaped Die	WHD 203K
7	200276-000	Guide Retainer	WGR 300
8	58584-000	Pilot Pin	PP 1200
9	60927-000	Keyed Die Adapter	WDA 208K
10	200395-000	Pedestal Die	HPD 203
—	43209-000	Shaped Ped Die	HPD 203K
11	75642-000	Punch Retainer	PR 100

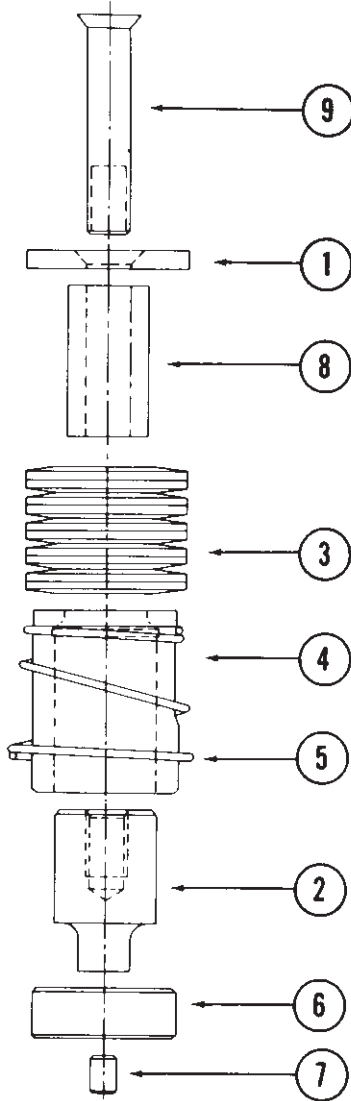
* Available on Spec. Order

2 1/2"
HOLDER WIDTH

8 3/8" SHUT
HEIGHT

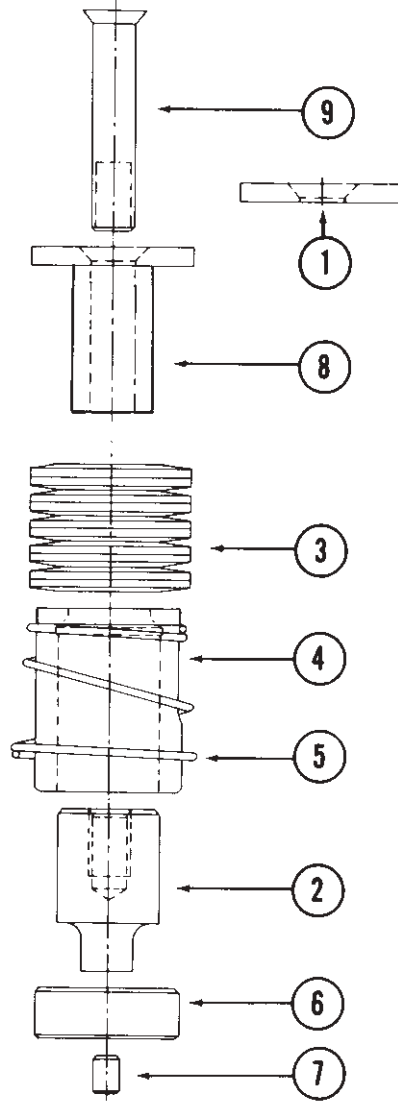
3 1/2" DIE
HEIGHT

HEAVY DUTY



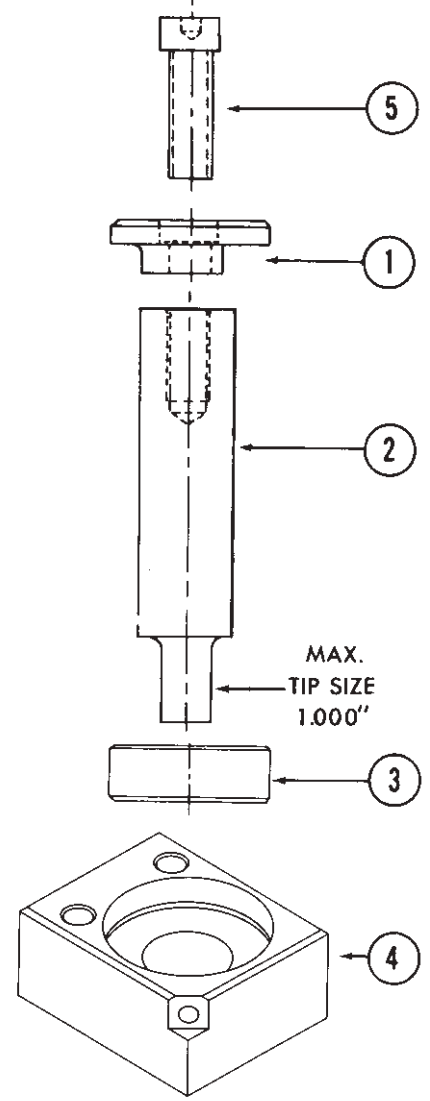
**PIERCE-ALL
SERIES—HD**

ITEM NO.	PIERCE-ALL REF. NO.	DESCRIPTION	UNIT TOOL CAT. NO.
1	1529	Punch Head	HPH 257
2	1520	Punch	HP 252
—	1521, 1522	Shaped Punch Ass'y	HPA 252K
3	4635	Stripper Spring (10) per set	HSS 255
4	3356	Guide	HG 254
—	3353	Keyed Guide	HG 254K
5	4335	Lifter Spring	HLS 256
6	2160	Die Button	HD 253
—	2161, 2162	Shaped Die	HD 253K
7	9000	Pilot Pin	PP 1000
—	9001	Pilot Pin (Shaped)	PP 1000K
8	1528	Punch Driver	D 258
9	9585	Punch Screw	PS 259



**UNIPUNCH PRODUCTS
SERIES—A**

ITEM NO.	UNIPUNCH PRODUCTS REF. NO.	DESCRIPTION	UNIT TOOL CAT. NO.
1	2471	Punch Head — (Old Style)	HPH 257
2	2411	Punch	HP 252
—	2416	Shaped Punch Ass'y	HPA 252K
3	2440	Stripper Spring (10) per set	HSS 255
4	2430	Guide	HG 254
—	2435	Keyed Guide	HG 254K
5	2470	Lifter Spring	HLS 256
6	2420	Die Button	HD 253
—	2425	Shaped Die	HD 253K
7	1001	Pilot Pin	PP 1000
—	1101	Pilot Pin (Shaped)	PP 1000K
8	2484	Punch Head & Driver (New Style)	HPH 257A
9	2485	Punch Screw	PS 259



UNIPUNCH PRODUCTS AH 2 1/2

ITEM NO.	UNIPUNCH PRODUCTS REF. NO.	DESCRIPTION	UNIT TOOL CAT. NO.
1	2671	Punch Head	HHPH 257
2	2611	Punch	HHP 252
—	2610	Punch & Hd. Assy.	HHPA 252A
—	2615	Shaped Punch Ass'y	HHPA 252K
3	2620	Die Button	HHD 253
—	2625	Shaped Die	HHD 253K
4	2674	Die Holder	HHDH 258
—	2675	Keyed Die Holder	HHDH 258K
5	—	Punch Screw	3/8"-24 x 1" S.H.C.S.
6	1101	Pilot Pin (Shaped)	PP-1000K

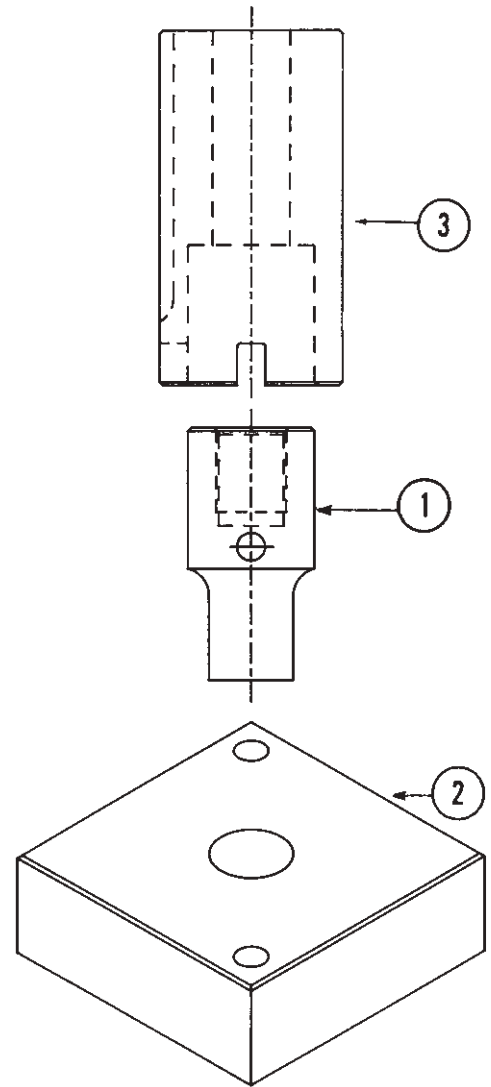
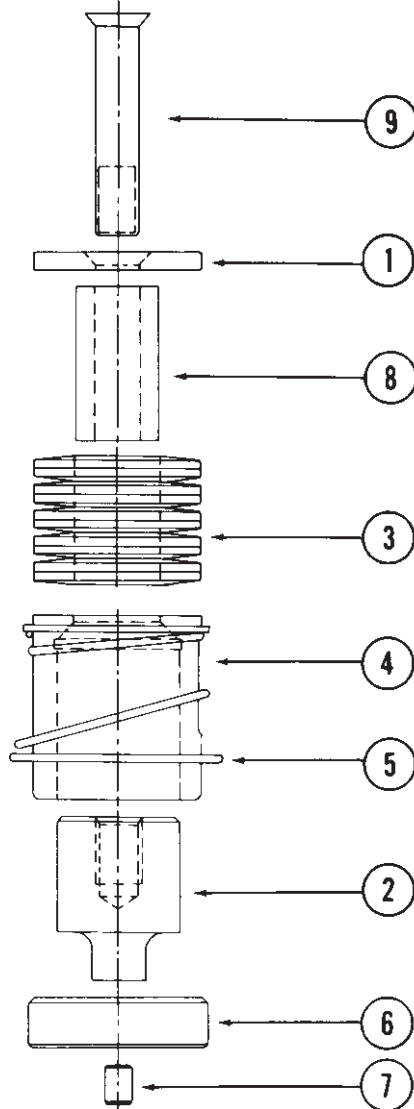
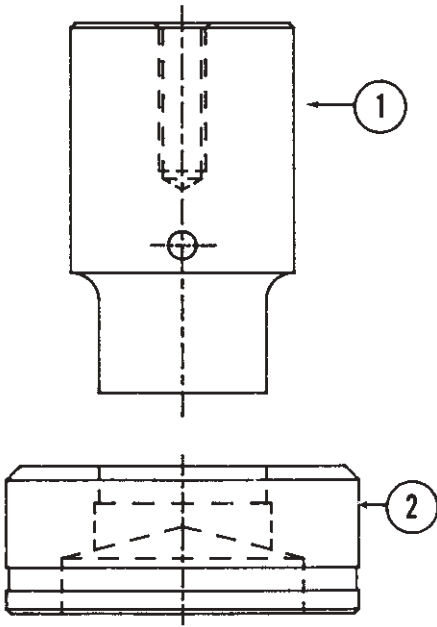
MAX. PUNCH TIP SIZE
FOR AJ 2 1/2 — 1.000"

2 1/2"
HOLDER WIDTH CONT'D.

3"
HOLDER WIDTH

8 3/8" SHUT
HEIGHT
3 1/2" DIE
HEIGHT

**HEAVY
DUTY**



**STRIPPIT
SERIES—CJ-2 1/2**

ITEM NO.	STRIPPIT REF. NO.	DESCRIPTION	UNITTOOL CAT. NO.
1	200261-000	Punch	WHP 252
—	200262-000	Shaped Punch	WHP 252K
2	200263-000	Die	WHD 253
—	200264-000	Shaped Die	WHD 253K
MIN. PUNCH DIA - .500 MAX. PUNCH DIA - 1.500			

**PIERCE-ALL
SERIES—HD**

ITEM NO.	PIERCE-ALL REF. NO.	DESCRIPTION	UNITTOOL CAT. NO.
1	1529	Punch Head	HPH 257
2	1530	Punch	HP 302
—	1531, 1532	Shaped Punch	HP 302K
3	4635	Stripper Spring (10) per set	HSS 255
4	3376	Guide	HG 304
—	3373	Keyed Guide	HG 304K
5	4325	Lifter Spring	HLS 306
6	2170	Die Button	HD 303
—	2171, 2172	Shaped Die	PHD 303K
7	9000	Pilot Pin	PP 1000
—	9,001	Pilot Pin (Shaped)	PP 1000K
8	1528	Punch Driver	D 258
9	9585	Punch Screw	PS 259
MIN. PUNCH DIA - .750 MAX. PUNCH DIA - 1.750			

**STRIPPIT
SERIES—CJ-3**

ITEM NO.	STRIPPIT REF. NO.	DESCRIPTION	UNITTOOL CAT. NO.
1	60531-001	Punch Tip Over 1.125	WPT 302-1
—	65849-000	Shaped Punch	WPT 303-1K
—	60531-002	Punch Tip Up to 1.125	WPT 302-2
—	60529-000	Shaped Punch	WPT 303-2K
2	61136-000	Die	WHD 303
—	61137-000	Shaped Die	WHD 303K
3	60527-000	Punch Driver	WD 309
MIN. PUNCH DIA - .406 MAX. PUNCH DIA - 1.375			
NOTE: OTHER COMPONENT PARTS AVAILABLE UPON REQUEST			

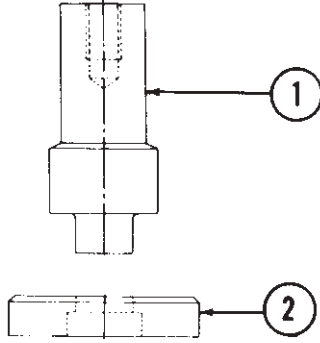
3 1/2"
HOLDER WIDTH

8 3/8" SHUT HEIGHT

3 1/2" DIE HEIGHT

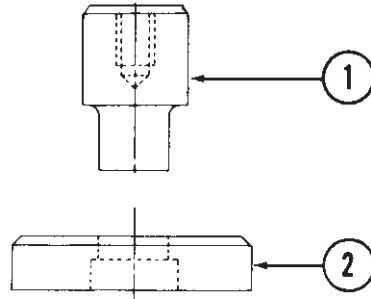
HEAVY DUTY

PIERCE-ALL SERIES—HD



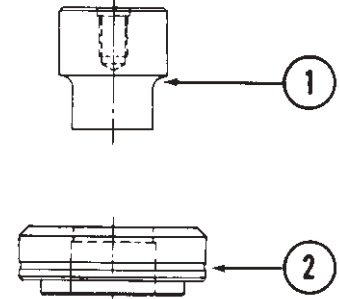
PUNCH TIP RANGE
.500" thru 2.000" Dia.

UNIPUNCH PRODUCTS SERIES—A and SERIES AH



PUNCH TIP RANGE
.375" thru 2.000" Dia.

STRIPPIT SERIES—CJ



PUNCH TIP RANGE
.875" thru 2.000" Dia.

ITEM NO.	PIERCE-ALL REF. NO.	DESCRIPTION	UNITTOOL CAT. NO.
1	1540	Punch	PHP 352
—	1541, 1542	Shaped Punch	PHP 352K
2	2180	Die	HD 353
—	2181, 2182	Shaped Die	HD 353K

ITEM NO.	UNIPUNCH PRODUCTS REF. NO.	DESCRIPTION	UNITTOOL CAT. NO.
1	2511	Punch	HHP 352
—	2515	Shaped Punch	HHP 352K
2	2520	Die	HHD 353
—	2525	Shaped Die	HHD 353K

ITEM NO.	STRIPPIT REF. NO.	DESCRIPTION	UNITTOOL CAT. NO.
1	75891	Punch	WHP 352
—	75892	Shaped Punch	WHP 352K
2	75893	Die	WHD 353
—	75894	Shaped Die	WHD 353K

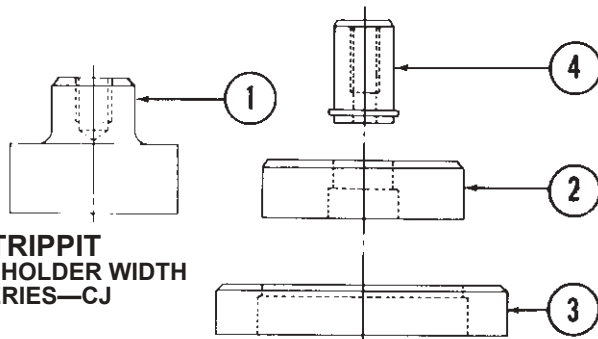
5" & 5 1/2"
HOLDER WIDTH

8 3/8" SHUT HEIGHT

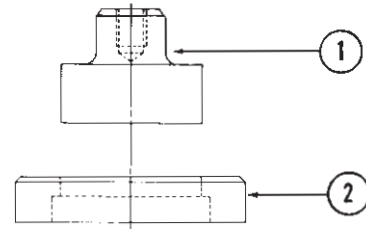
3 1/2" DIE HEIGHT

HEAVY DUTY

STRIPPIT 5" HOLDER WIDTH SERIES—CJ



UNIPUNCH PRODUCTS 5 1/2" & 6" HOLDER WIDTH SERIES—A and AH



ITEM NO.	STRIPPIT REF. NO.	DESCRIPTION	UNITTOOL CAT. NO.
1	86717-000	Punch 1 1/4 to 1 9/16	MP 502A
2	48684-000	Punch Tip Over 1 9/16 to 2 1/4	MP 502B
—	65168-000	Shaped Punch	MP 502AK
2	48684-000	Punch Tip Over 2 1/4 to 2 7/8	MP 502 C
—	65169-000	Shaped Punch	MP 502CK
2	48684-000	Punch Tip Over 2 7/8 to 3 1/2	MP 502D
—	65170-000	Shaped Punch	MP-502DK
3	51712-000	Die	HD 603
—	65043-000	Shaped Die	HD 603K
4	48851-000	Punch Retainer	WPR 500

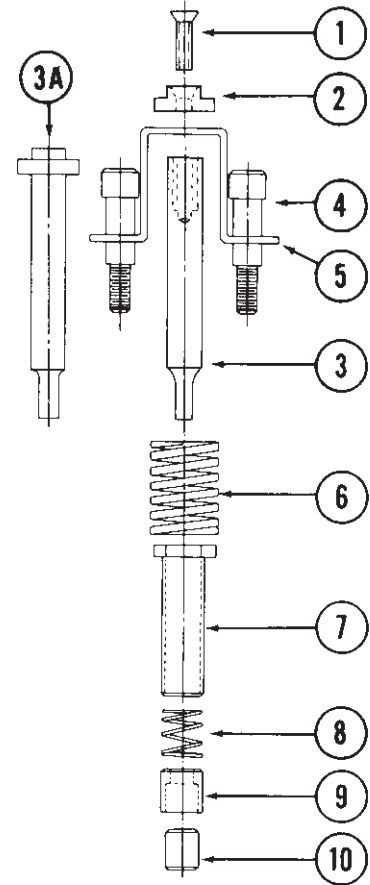
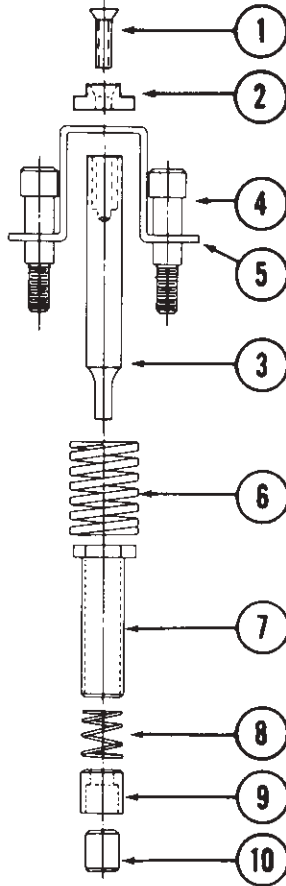
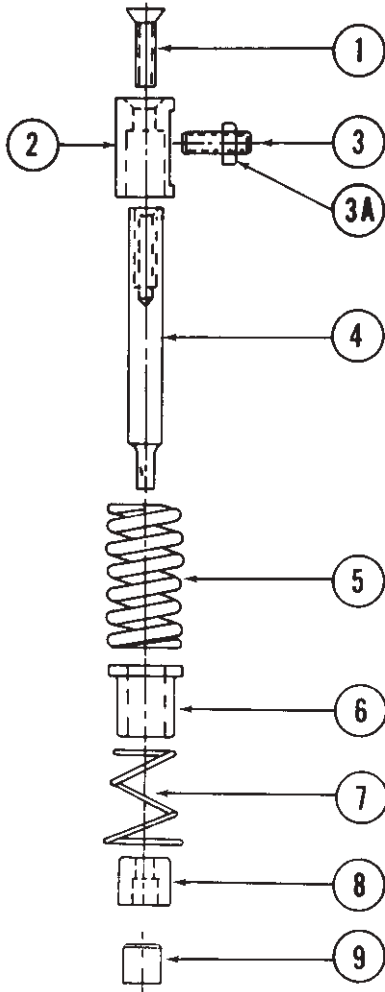
ITEM NO.	UNIPUNCH PRODUCTS REF. NO.	DESCRIPTION	UNITTOOL CAT. NO.
1	2512	Punch Tip Size (Min 1.312 Dia.)	HHP 552
—	2516	Shaped Punch	HHP 552K
2	3820	Die	HHD 553
—	3825	Shaped Die	HHD 553K

3/4"
HOLDER WIDTH

5 1/2" SHUT HEIGHT

2 19/32" DIE HEIGHT

MEDIUM DUTY



**PIERCE-ALL
RD SERIES**

ITEM NO.	PIERCE-ALL REF. NO.	DESCRIPTION	UNITTOOL CAT. NO.
1	10-32 x 3/4" F.H.S.S.	Flat Head Socket Screw	10-32 x 3/4" F.H.S.S.
2	3212	Upper Guide	PMPH 077
3	10-32 x 3/4" S.S.S.	Socket Set Screw	10-32 x 3/4" S.S.S.
3A	10-32 Lk. Nut	Lock Nut	10-32 Lk. Nut
4	1214	Punch	MP 072-2 .250 Max.
5	4420	Stripper Spring	PMSS 075
6	3213	Lower Guide	PMLG 074
7	4320	Lifter Spring	MLS 076
8	2510	Die	MD 073 .262 Max.
9	9000	Pilot Pin	PP 1000

**UNIPUNCH PRODUCTS
BX SERIES**

ITEM NO.	UNIPUNCH PRODUCTS REF. NO.	DESCRIPTION	UNITTOOL CAT. NO.
1	10-32 x 1" F.H.S.S.	Flat Head Socket Screw	10-32 x 1" F.H.S.S.
2	3171	Punch Head	MPH 077
3	3111	Punch	MP 072-2
—	3110	Punch & Head Assy.	MPA 072-2A
4	3033	Stripper Bolt	MS 078
5	3032	Retainer Clip	MR 079
6	3040	Stripper Spring	MSS 075
7	3030	Stripper Guide	MG 074-2
8	4273	Lifter-Spring	MLS 076
9	3121	Die	MD 073
10	1001	Pilot Pin	PP 1000

**STRIPPIT
BN SERIES**

ITEM NO.	STRIPPIT REF. NO.	DESCRIPTION	UNITTOOL CAT. NO.
1	10-32 x 1" F.H.S.S.	Flat Head Socket Screw	10-32 x 1" F.H.S.S.
2	—	Punch Head	MPH 077
3	—	Punch (Stub Tip)	MP 072-2
*3A	65003-000	Solid Hd. Punch (Stub Tip)	WMP 072
4	50557-000	Stripper Bolts	MSB 078
5	50556-000	Retainer Clip	MR 079
6	17301-000	Stripper Spring	MSS 075
7	65004-000 (200226-000)	Punch Guide (Open)	MG 074
8	50054-000	Lifter Spring	MLS 076
9	38888-000	Die	MD 073
10	38549-000	Pilot Pin	PP 1000

FOR SHAPED PUNCHES & DIES, REFER TO PRICE LIST

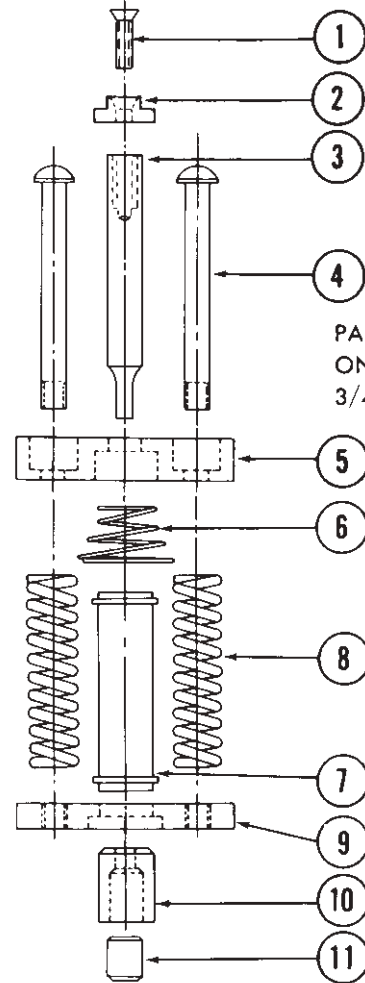
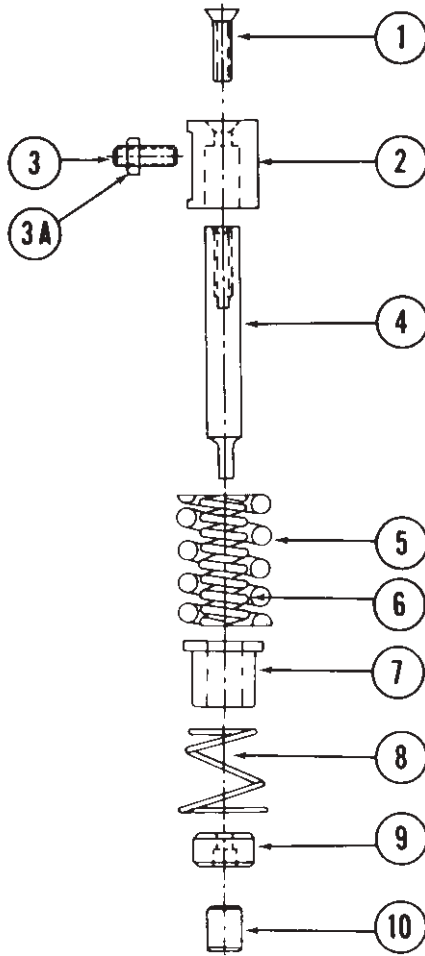
* Available on Special Order

1"
HOLDER WIDTH

5 1/2" SHUT HEIGHT

2 19/32" DIE HEIGHT

MEDIUM DUTY



PARTS ALSO USED
ON OLD STYLE
3/4" B UNIT

**PIERCE-ALL
RD SERIES**

**UNIPUNCH
B SERIES**

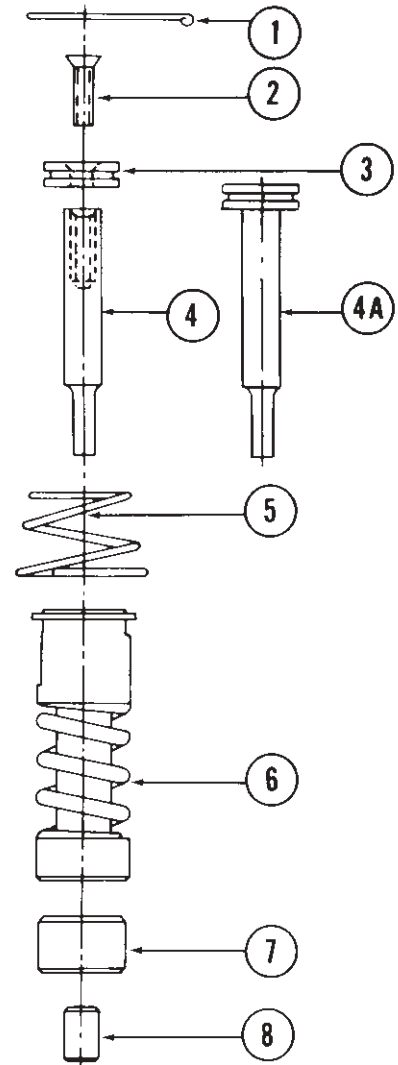
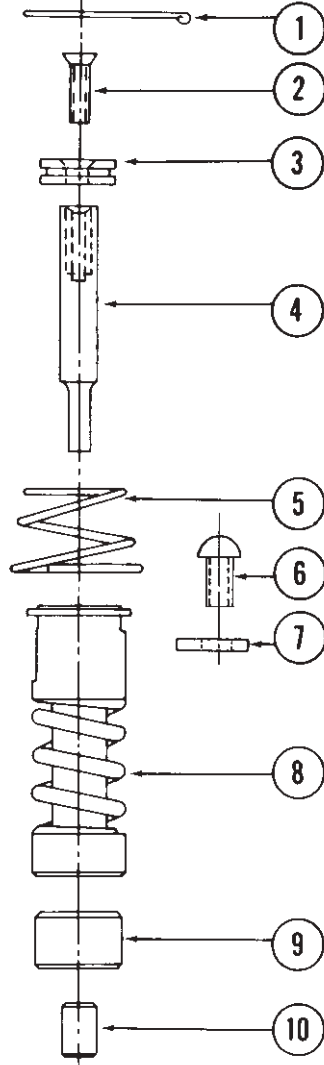
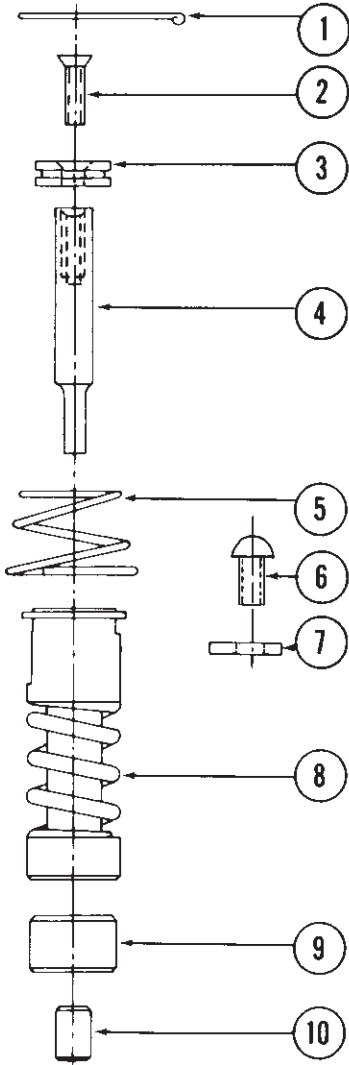
ITEM NO.	PIERCE-ALL REF. NO.	DESCRIPTION	UNITTOOL CAT. NO.
1	10-32 x 3/4" F.H.S.S.	Flat Head Socket Screw	10-32 x 3/4" F.H.S.S.
2	3222	Upper Guide	PMPH 107
3	10-32 x 3/4" S.S.S.	Socket Set Screw	10-32 x 3/4" S.S.S.
3A	10-32 Lk. Nut	Lock Nut	10-32 Lock Nut
4	1224	Punch	PMP 102
5	4421	Stripper Spring	PMSS 105
6	4411	Filler Spring	PMFS 105A
7	3223	Lower Guide	PMLG 104
8	4321	Lifter Spring	PMLS 106
9	2520	Die	MD 103
10	9000	Pilot Pin	PP 1000

ITEM NO.	UNIPUNCH PRODUCTS REF. NO.	DESCRIPTION	UNITTOOL CAT. NO.
1	10-32 x 1" F.H.S.S.	Flat Head Socket Screw	10-32 x 1" F.H.S.S.
2	3271	Punch Head	MPH 107
3	3211	Punch	MP 122
—	3210	Punch & Head Assy.	MPA 102A
4	3176	Stripper Guide Bolt	MSGB 104D
5	3173	Upper Plate	MUP 104C
6	3170	Lifter Spring	MLS 106
7	3230	Stripper Guide	MG 104
8	3240	Stripper Spring	UMSS 105
9	3172	Lower Plate	MLP 104B
10	3220	Die	MD 103
11	1001	Pilot Pin	PP 1000

1 1/4"
HOLDER WIDTH

5 1/2" SHUT HEIGHT
2 19/32" DIE HEIGHT

MEDIUM DUTY



**PIERCE-ALL
RD SERIES**

ITEM NO.	PIERCE-ALL REF. NO.	DESCRIPTION	UNITTOOL CAT. NO.
1	4933	Punch Retainer	MPR 128
2	10-32 x 3/4" F.H.S.S.	Flat Head Socket Screw	10-32 x 3/4" F.H.S.S.
3	1239	Punch Head	MPH 127
4	1234	Punch	MP 122
	1230	Punch & Hd. Assy.	MPA 122A
	1231, 1232	Shaped Punch	MPA 122K
5	4322	Lifter Spring	MLS 126
6	1/4"-20 x 5/8" B.H.S.S.	Button Head Socket Screw	1/4"-20 x 5/8" B.H.S.S.
7	9030	Guide Retainer	MGR 300
8	3236	Guide Assembly	MG 124
	3237	Keyed Guide	MG 124K
9	2530	Die	MD 123
	2531, 2532	Shaped Die	MD 123K
10	9000	Pilot Pin	PP 1000
	9001	Pilot Pin (Shaped)	PP 1000K

**UNIPUNCH PRODUCTS
BX, B SERIES**

ITEM NO.	UNIPUNCH PRODUCTS REF. NO.	DESCRIPTION	UNITTOOL CAT. NO.
1	3272	Punch Retainer	MPR 128
2	10-32 x 3/4" F.H.S.S.	Flat Head Socket Screw	10-32 x 3/4" F.H.S.S.
3	3371	Punch Head	MPH 127
4	3211	Punch	MP 122
	3310	Punch & Hd. Assy.	MPA 122A
	3315	Shaped Punch	MPA 122K
5	3370	Lifter Spring	MLS 126
6	1/4"-20 x 5/8" B.H.S.S.	Button Head Socket Screw	1/4"-20 x 5/8" B.H.S.S.
7	1030	Guide Retainer	MGR 300
8	3330	Guide Assembly	MG 124
	3335	Keyed Guide	MG 124K
9	2120	Die	HD 123
	2125	Shaped Die	HD 123K
	3321	Die (BX)	MD 123
10	1001	Pilot Pin	PP 1000
	1101	Pilot Pin (Shaped)	PP 1000K

**STRIPPIT
BN SERIES**

ITEM NO.	STRIPPIT REF. NO.	DESCRIPTION	UNITTOOL CAT. NO.
1	47357-000	Punch Retainer	MPR 128
2	10-32 x 3/4" F.H.S.S.	Flat Head Socket Screw	10-32 x 3/4" F.H.S.S.
3	—	Punch Head	MPH 127
4	—	Punch	MP 122
	—	Punch & Hd. Assy.	MPA 122A
	—	Shaped Punch	MPA 122K
*4A	42332-000	Solid Head Punch	WMP 122
	61190-000	Shaped Punch (solid hd)	WMP 122K
5	41677-000	Lifter Spring	MLS 126
6	200631-000	Guide Assembly	MG 124
	64997-000	Keyed Guide	MG 124K
7	37034-000	Die	MD 123
	37483-000	Shaped Die	HD 123K
8	38549-000	Pilot Pin	PP 1000
	46943-000	Pilot Pin (Shaped)	PP 1000K
*	61085-000	Stripper Button	WMS 129

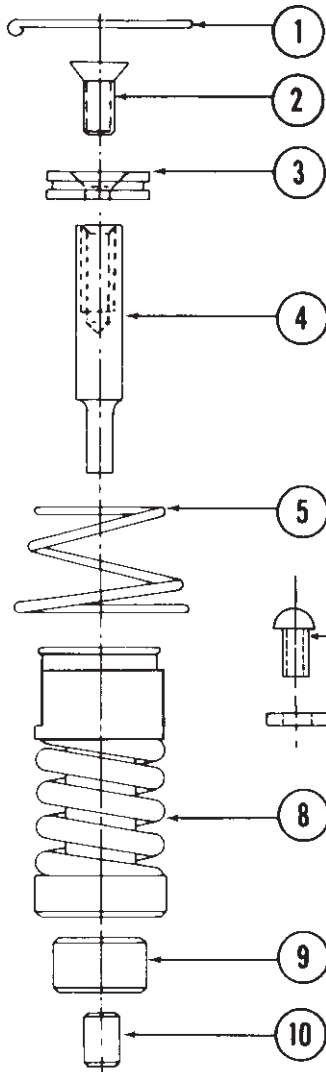
FOR SHAPED PUNCHES & DIES, REFER TO PRICE LIST

* Available on Special Order

1 3/4"
HOLDER WIDTH

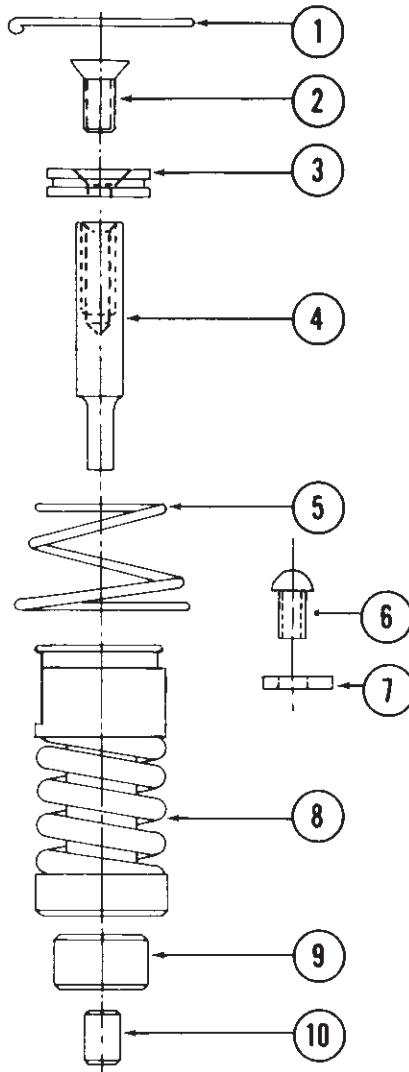
5 1/2" SHUT HEIGHT
2 19/32" DIE HEIGHT

MEDIUM DUTY



**PIERCE-ALL
RD SERIES**

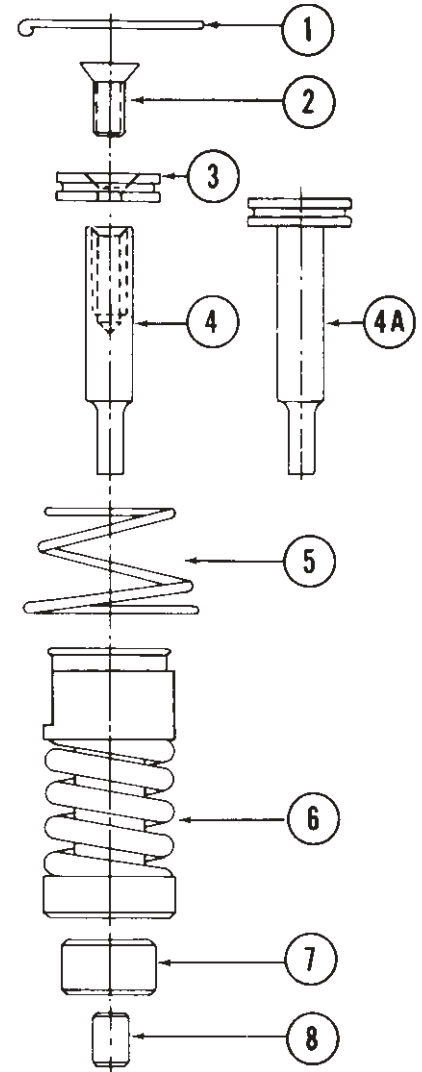
ITEM NO.	PIERCE-ALL REF. NO.	DESCRIPTION	UNITTOOL CAT. NO.
1	4934	Punch Retainer	MPR 178
2	5/16"-24 x 1" F.H.S.S.	Flat Head Socket Screw	5/16"-24 x 1" F.H.S.S.
3	1249	Punch Head	MPH 177
4	1244	Punch	MP 172
	1240	Punch & Hd. Assy.	MPA 172A
	1241, 1242	Shaped Punch	MPA 172K
5	4323	Lifter Spring	MLS 176
6	1/4"-20 x 5/8" B.H.S.S.	Button Head Socket Screw	1/4"-20 x 5/8" B.H.S.S.
7	9030	Guide Retainer	MGR 300
8	3246	Guide Assembly	MG 174
	3247	Keyed Guide	MG 174K
9	2540	Die	MD 173
	2541, 2542	Shaped Die	MD 173K
10	9000	Pilot Pin	PP 1000
	9001	Pilot Pin (Shaped)	PP 1000K



**UNIPUNCH PRODUCTS
BX, B SERIES**

ITEM NO.	UNIPUNCH PRODUCTS REF. NO.	DESCRIPTION	UNITTOOL CAT. NO.
1	3472	Punch Retainer	MPR 178
2	5/16"-24 x 1" F.H.S.S.	Flat Head Socket Screw	5/16"-24 x 1" F.H.S.S.
3	3471	Punch Head	MPH 177
4	3411	Punch	MP 172
	3410	Punch & Hd. Assy.	MPA 172A
	3415	Shaped Punch	MPA 172K
5	3470	Lifter Spring	MLS 176
6	1/4"-20 x 5/8" B.H.S.S.	Button Head Socket Screw	1/4"-20 x 5/8" B.H.S.S.
7	1030	Guide Retainer	MGR 300
8	3430	Guide Assembly	MG 174
	3435	Keyed Guide	MG 174K
9	2120	Die	HD 123
	2125	Shaped Die	HD 123K
	3421	Die (BX)	MD 173
10	1001	Pilot Pin	PP 1000
	1101	Pilot Pin (Shaped)	PP 1000K

FOR SHAPED PUNCHES & DIES, REFER TO PRICE LIST



**STRIPPIT
BN SERIES**

ITEM NO.	STRIPPIT REF. NO.	DESCRIPTION	UNITTOOL CAT. NO.
1	47443-000	Punch Retainer	MPR 178
2	5/16"-24 x 1" F.H.S.S.	Flat Head Socket Screw	5/16"-24 x 1" F.H.S.S.
3	—	Punch Head	MPH 177
4	—	Punch	MP 172
	—	Punch & Hd. Assy.	MPA 172A
	—	Shaped Punch	MPA 172K
*4A	41917-000	Solid Head Punch	WMP 172
—	61199-000	Shaped Punch (solid hd)	WMP 172K
5	41708-000	Lifter Spring	MLS 176
6	200632-000	Guide Assembly	MG 174
	64998-000	Keyed Guide	WMG 174K
7	37067-000	Die	MD 173
	37484-000	Shaped Die	MD 173K
8	38549-000	Pilot Pin	PP 1000
	46943-000	Pilot Pin (Shaped)	PP 1000K
*	61086-000	Stripper Button	WMS 179

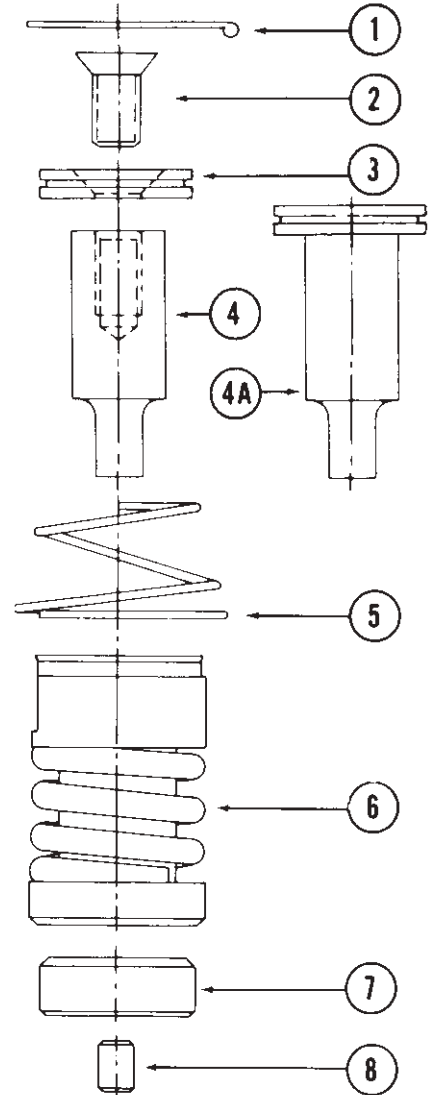
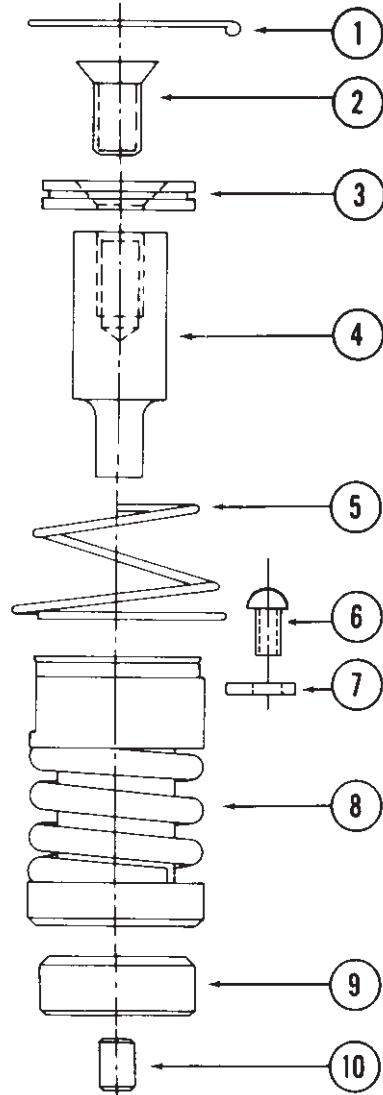
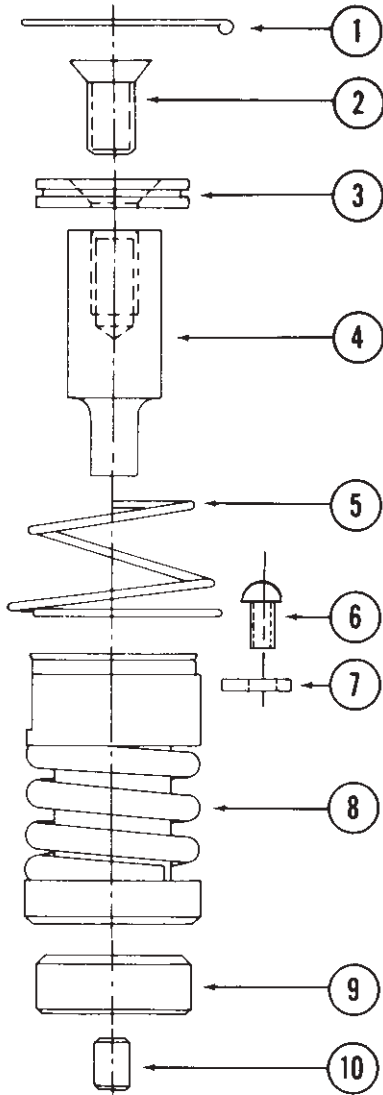
* Available on Special Order

2 1/4"
HOLDER WIDTH

5 1/2" SHUT HEIGHT

2 19/32" DIE HEIGHT

MEDIUM DUTY



**PIERCE-ALL
RD SERIES**

ITEM NO.	PIERCE-ALL REF. NO.	DESCRIPTION	UNIT TOOL CAT. NO.
1	4935	Punch Retainer	MPR 228
2	1/2"-20 x 1" F.H.S.S.	Flat Head Socket Screw	1/2"-20 x 1" F.H.S.S.
3	1259	Punch Head	MPH 227
4	1254	Punch	MP 222
—	1250	Punch & Hd. Assy.	MPA 222A
—	1251, 1252	Shaped Punch	MPA 222K
5	4324	Lifter Spring	MLS 226
6	1/4"-20 x 5/8" B.H.S.S.	Button Head Socket Screw	1/4"-20 x 5/8" B.H.S.S.
7	9030	Guide Retainer	MGR 300
8	3256	Guide Assembly	MG 224
—	3257	Keyed Guide	MG 224K
9	2550	Die	MD 223
—	2551, 2552	Shaped Die	MD 223K
10	9000	Pilot Pin	PP 1000
—	9001	Pilot Pin (Shaped)	PP 1000K

**UNIPUNCH PRODUCTS
BX, B SERIES**

ITEM NO.	UNIPUNCH PRODUCTS REF. NO.	DESCRIPTION	UNIT TOOL CAT. NO.
1	3572	Punch Retainer	MPR 228
2	1/2"-20 x 1" F.H.S.S.	Flat Head Socket Screw	1/2"-20 x 1" F.H.S.S.
3	3571	Punch Head	MPH 227
4	3511	Punch	MP 222
—	3510	Punch & Hd. Assy.	MPA 222A
—	3517	Shaped Punch	MPA 222K
5	3570	Lifter Spring	MLS 226
6	1/4"-20 x 5/8" B.H.S.S.	Button Head Socket Screw	1/4"-20 x 5/8" B.H.S.S.
7	1030	Guide Retainer	MGR 300
8	3530	Guide Assembly	MG 224
—	3536	Keyed Guide	MG 224K
9	2320	Die	HD 203
—	3521	Die (BX)	MD 223
—	3526	Shaped Die	MD 223K
10	1001	Pilot Pin	PP 1000
—	1101	Pilot Pin (Shaped)	PP 1000K

**STRIPPIT
BN SERIES**

ITEM NO.	STRIPPIT REF. NO.	DESCRIPTION	UNIT TOOL CAT. NO.
1	47444-000	Punch Retainer	MPR 228
2	1/2"-20 x 1" F.H.S.S.	Flat Head Socket Screw	1/2"-20 x 1" F.H.S.S.
3	—	Punch Head	MPH 227
4	—	Punch	MP 222
—	—	Punch & Hd. Assy.	MPA 222A
—	—	Shaped Punch	WMPA 222K
*4A	47056-000	Solid Head Punch	WMP 222
—	61192-000	Shaped Punch (solid hd)	WMP 222K
5	61180-000	Lifter Spring	MLS 226
6	200633-000	Guide Assembly	MG 224
—	64999-000	Keyed Guide	WVG 224K
7	37099-000	Die	MD 223
—	37485-000	Shaped Die	MD 223K
8	38549-000	Pilot Pin	PP 1000
—	46943-000	Pilot Pin (Shaped)	PP 1000K
*	61087-000	Stripper Button	WMS 229

FOR SHAPED PUNCHES & DIES, REFER TO PRICE LIST

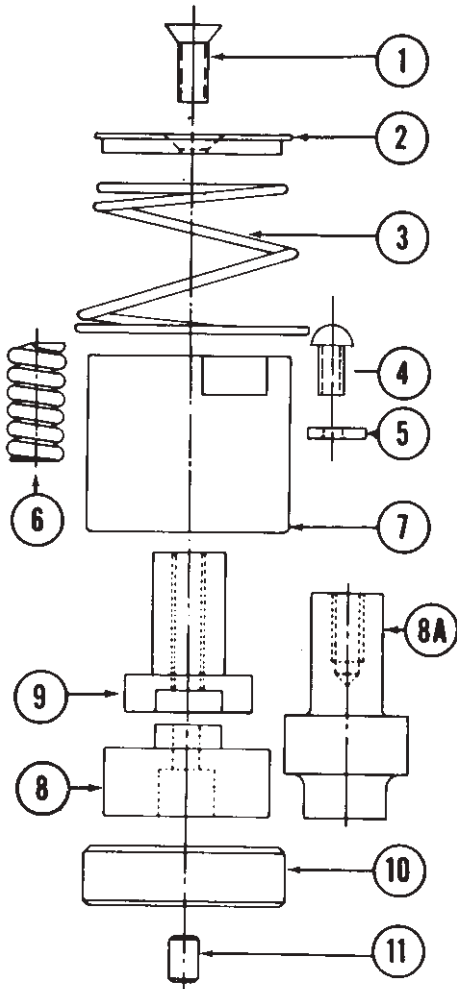
* Available on Special Order

3"

HOLDER WIDTH

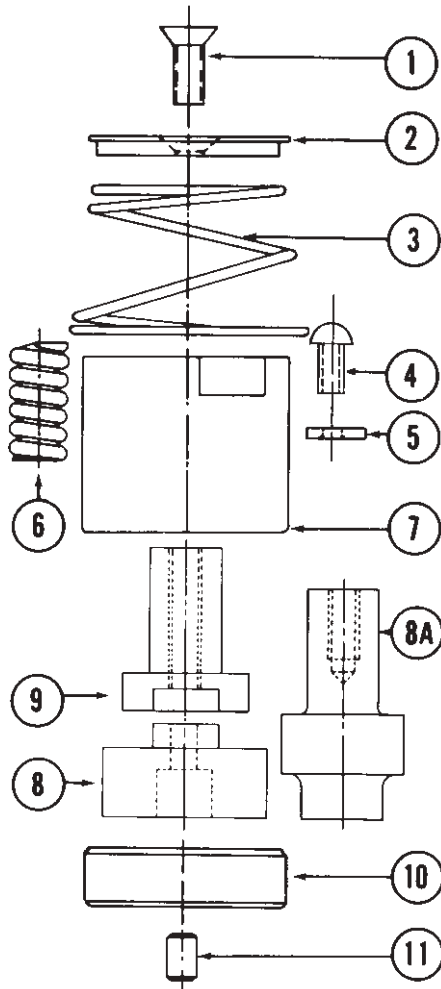
5 1/2" SHUT HEIGHT
2 19/32" DIE HEIGHT

MEDIUM DUTY



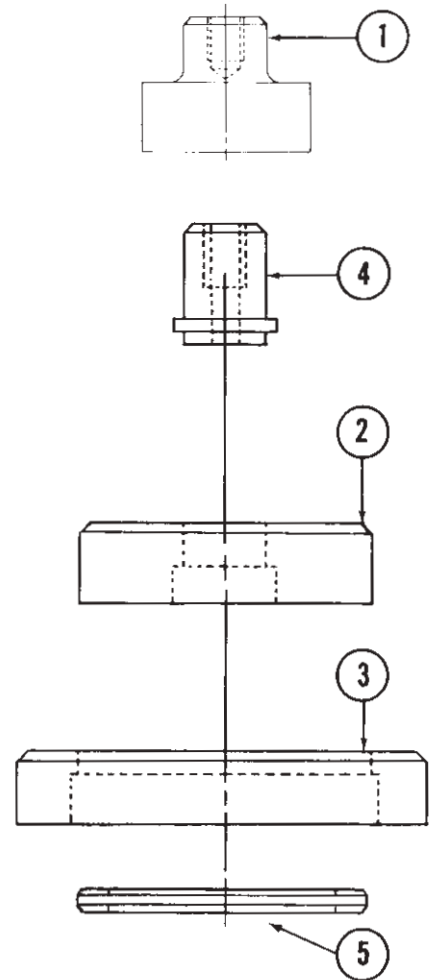
PIERCE-ALL RD SERIES

ITEM NO.	PIERCE-ALL REF. NO.	DESCRIPTION	UNIT TOOL CAT. NO.
1	3/8"-24 x 1" F.H.S.S.	Flat Head Socket Screw	3/8"-24 x 1" F.H.S.S.
2	1269	Punch Head	MPH 307
3	4325	Lifter Spring	MLS 306
4	1/4"-20 x 5/8" B.H.S.S.	Button Head Socket Screw	1/4"-20 x 5/8" B.H.S.S.
5	9030	Guide Retainer	MGR 300
6	4425	Stripper Spring	MSS 305
7	3260	Guide	MG 304
—	3261	Keyed Guide	MG 304K
8	1260-1	Punch Tip for 1.125 & Over	MP 302
—	1261, 1262	Shaped Punch	MP 302K
8A	1260	Punch Tip for 1.124 & Smaller	MP 302-1
9	1260-2	Punch Driver	MPD-308
10	2560	Die	HD 303
—	2561, 2562	Shaped Die	HD 303K
11	9000	Pilot Pin	PP 1000
—	9001	Pilot Pin (Shaped)	PP 1000K



UNIPUNCH PRODUCTS BX SERIES

ITEM NO.	UNIPUNCH PRODUCTS REF. NO.	DESCRIPTION	UNIT TOOL CAT. NO.
1	3/8"-24 x 1" F.H.S.S.	Flat Head Socket Screw	3/8"-24 x 1" F.H.S.S.
2	3671	Punch Head	MPH 307
3	3670	Lifter Spring	MLS 306
4	1/4"-20 x 5/8" B.H.S.S.	Button Head Socket Screw	1/4"-20 x 5/8" B.H.S.S.
5	1030	Guide Retainer	MGR 300
6	3640	Stripper Spring	MSS 305
7	3672	Guide	MG 304
—	3675	Keyed Guide	MG 304K
8	3610-1	Punch Tip for 1.125 & Over	MP 302
—	3615	Shaped Punch	MP 302K
8A	3610-2	Punch Tip for 1.124 & Smaller	MP 302-1
9	3611	Punch Driver	MPD 308
10	3260	Die	HD 303
—	3625	Shaped Die	HD 303K
11	1001	Pilot Pin	PP 1000
—	1101	Pilot Pin (Shaped)	PP 1000K



STRIPPIT BN SERIES

ITEM NO.	STRIPPIT REF. NO.	DESCRIPTION	UNIT TOOL CAT. NO.
1	65025-000	Punch Tip	WMP 302
—	65024-000	Shaped Punch	WMP 302K
2	57378-000	Die	WMD 303
—	57421-000	Shaped Die	WMD 303K
3	46943-000	Pilot Pin (Shaped)	PP 1000K

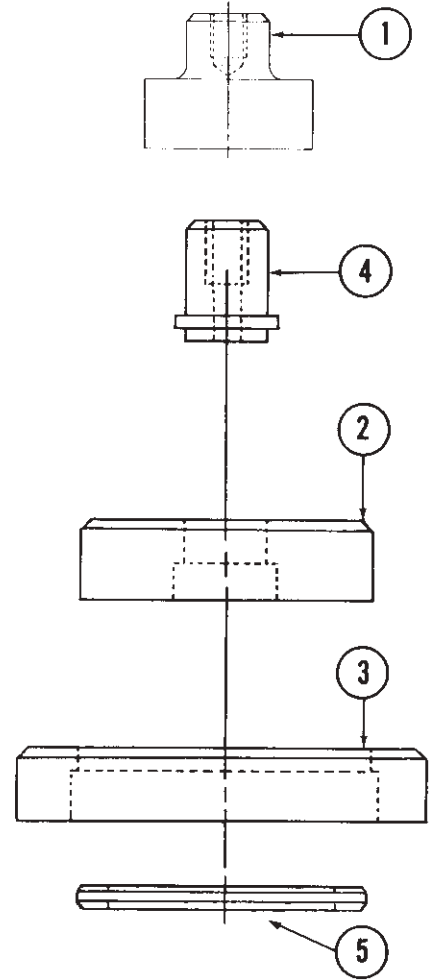
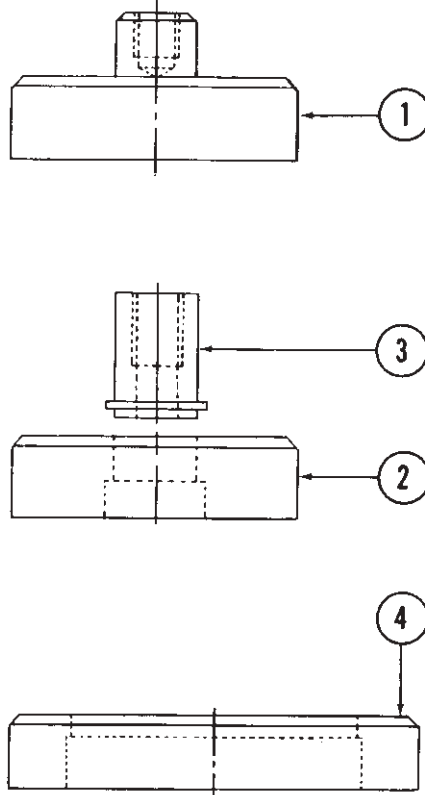
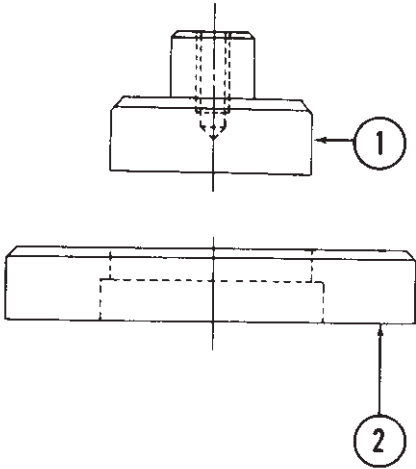
FOR SHAPED PUNCHES & DIES, REFER TO PRICE LIST

5" & 5 1/2"

HOLDER WIDTH

5 1/2" SHUT HEIGHT
2 19/32" DIE HEIGHT

MEDIUM DUTY



PIERCE-ALL 5 1/2" HOLDER WIDTH RD SERIES

ITEM NO.	PIERCE-ALL REF. NO.	DESCRIPTION	UNIT TOOL CAT. NO.
1	1480	Punch	MP 502A-D
—	1481, 1482	Shaped Punch	MP 502AK
—	1481, 1482	Shaped Punch	MP 502CK
—	1481, 1482	Shaped Punch	MP 502DK
2	2490	Die	HD 603
—	2491, 2492	Shaped Die	HD 603K

UNIPUNCH PRODUCTS 5" HOLDER WIDTH BX, B SERIES

ITEM NO.	UNIPUNCH PRODUCTS REF. NO.	DESCRIPTION	UNIT TOOL CAT. NO.
1	3810	Punch 1/4 to 1 9/16	MP 502A
—	3815	Shaped Punch	UMP 502AK
2	3810	Punch Tip Over 1 9/16 to 2 1/4	MP 502B
2	3810	Punch Tip Over 2 1/4 to 2 7/8	MP 502C
—	3815	Shaped Punch	UMP 502CK
2	3810	Punch Tip Over 2 7/8 to 3 1/2	MP 502D
—	3815	Shaped Punch	UMP 502DK
3	3880	Punch Retainer	PR 500
4	3820	Die	HD 603
—	3825	Shaped Die	HD 603K

STRIPIT 5" HOLDER WIDTH BN SERIES

ITEM NO.	STRIPIT REF. NO.	DESCRIPTION	UNIT TOOL CAT. NO.
1	86717-000	Punch 1/4 to 1 9/16	MP 502A
—	86718-000	Shaped Punch	MP 502AK
2	48684-000	Punch Tip Over 1 9/16 to 2 1/4	MP 502B
2	48684-000	Punch Tip Over 2 1/4 to 2 7/8	MP 502C
—	49076-000	Shaped Punch	MP 502CK
2	48684-000	Punch Tip Over 2 7/8 to 3 1/2	MP 502D
—	49077-000	Shaped Punch	MP 502DK
3	51712-000	Die	HD 603
—	51713-000	Shaped Die	HD 603K
4	48851-000	Punch Retainer	PR 500
5	90913-000	Stripper Plate (Specify Punch Tip Size)	9509

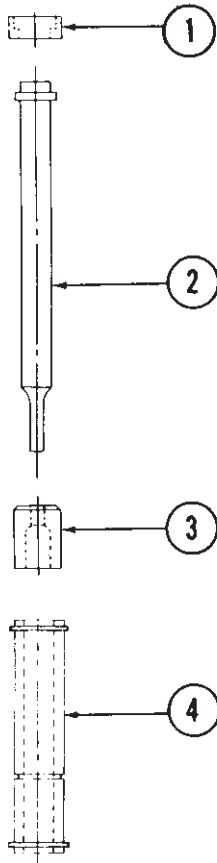
FOR SHAPED PUNCHES & DIES, REFER TO PRICE LIST

3/4"
HOLDER WIDTH

7 1/2" & 6 1/4" SHUT HEIGHT

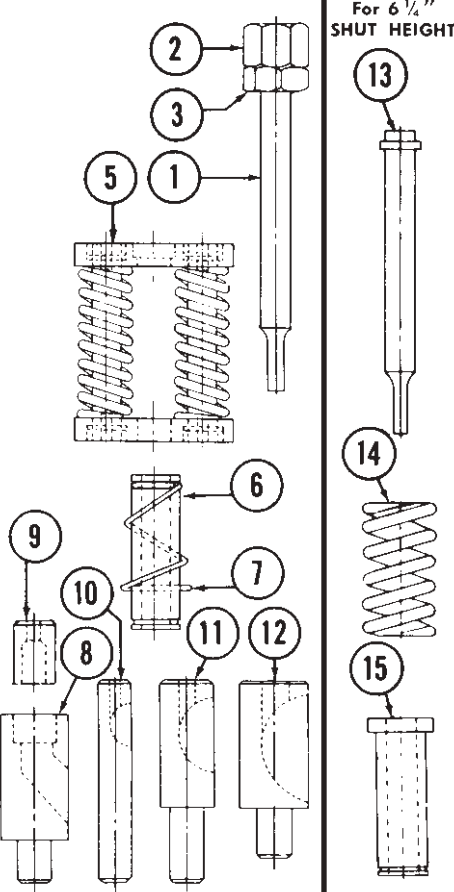
3 1/8" DIE HEIGHT

LIGHT DUTY



**PIERCE-ALL
LD SERIES**

ITEM NO.	PIERCE-ALL REF. NO.	DESCRIPTION	UNITOOL CAT. NO.
1	1119	Punch Head	PLPH 077
2	1114	Punch	PLP 072
—	1110	Punch & Hd. Assy.	PLPA 072A
3	2100	Die	LD 073
4	3110	Guide	PLG 074

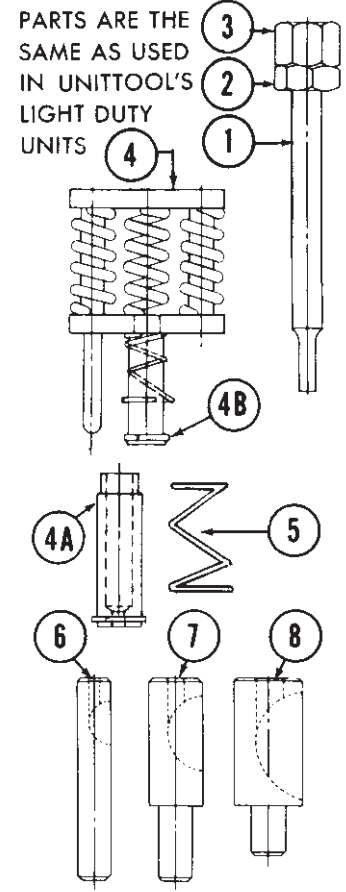


**UNIPUNCH PRODUCTS
G SERIES**

ITEM NO.	UNIPUNCH PRODUCTS REF. NO.	DESCRIPTION	UNITOOL CAT. NO.
—	4218	Punch Complete with Head Nuts	LPA 072A
1	4217	Punch Body	LP 072
2	4219	Head Nut	LHN 072C
3	4239	Lock Nut	LLN 072D
5	4241	Spring Assy.	LSA 075
6	4430	Guide (Open End)	LG 074
7	4273	Lifter Spring	LLS 076
8	4271	Die Adapter	LDA 078
9	4220	Die Button	LD 073
10	4221	3/8" O.D. Die for Punch Size up to .156	LPD 073A
11	4222	1/2" O.D. Die for Punch Size up to .250	LPD 073B
12	4226	3/4" O.D. Die for Punch Size up to .3125	LPD 073C

For 6 1/4" SHUT HEIGHT

13	4210	Punch	LP 072E
14	4440	Spring	LSS 075A
15	4431	Guide (Open End)	LG 074A



PARTS ARE THE SAME AS USED IN UNITOOL'S LIGHT DUTY UNITS

**STRIPPIT
C SERIES**

ITEM NO.	STRIPPIT REF. NO.	DESCRIPTION	UNITOOL CAT. NO.
—	39508	Punch Complete with Head Nuts	LPA 072A
1	39574	Punch Body	LP 072
2	39572	Head Nut	LHN 072C
3	39573	Lock Nut	LLN 072D
4	39494	1 Stripping Guide Assy. (Specify Punch Tip Size)	LSA 075-1
4A	—	2 Guide Only (Specify Punch Tip Size)	LG 075-2
4B	10658	Retainer Ring	LGR 075
5	50554	Lifter Spring	LLS 076
6	38820	3/8" O.D. Die for Punch Size up to .156	LPD 073A
7	38822	1/2" O.D. Die for Punch Size up to .250	LPD 073B
8	39529	3/4" O.D. Die for Punch Size up to .3125	LPD 073C

¹ Includes Retainer Ring & Lifter Spring

² Includes Retainer Ring

For 6 1/4" SHUT HEIGHT

9	38619	Solid Head Punch	WLP 072
10	38839	Spring	LSS 075A
11	37156	Guide	LG 074A